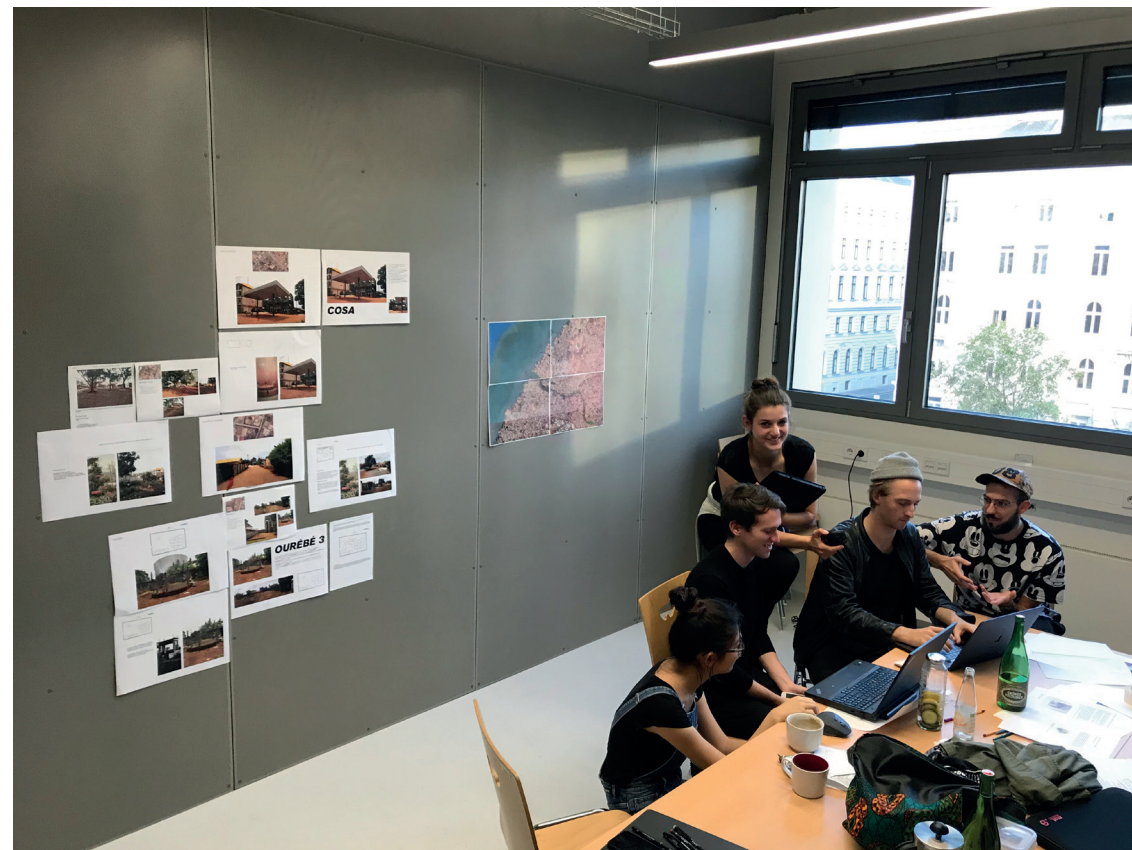


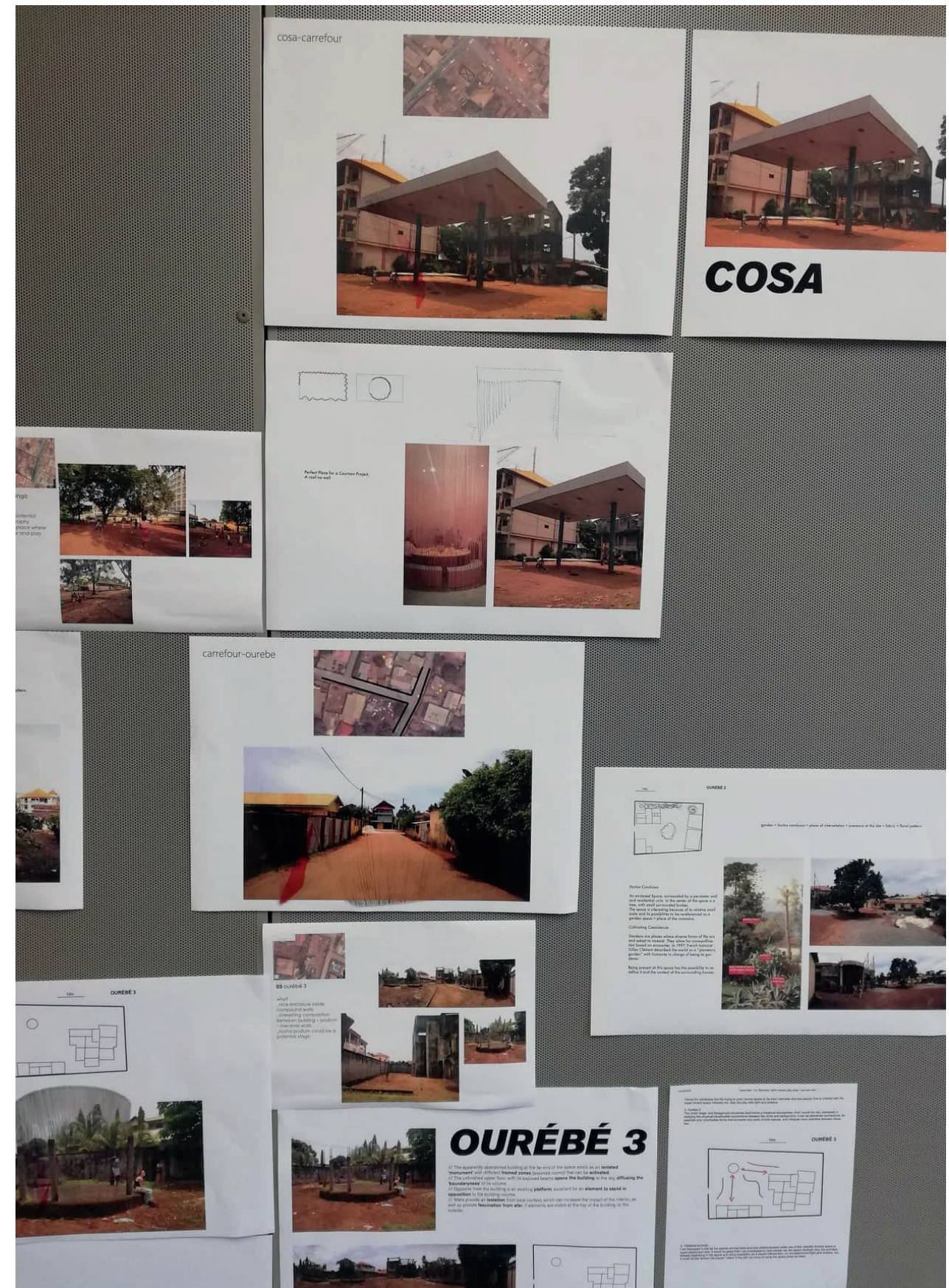
Conakry



Conakry.
Identifying places of interest,
and their spatial relations.



Workshop situation.
Evaluating sites for potential spatial interventions in Conakry.



MANIFESTO

We will work together.
We will focus on one site,
produce there,
and spread out from there,
with smaller interventions into the neighbourhood.

Textile and fabrication.
The idea of a curtain as a space generating object,
or a permeable border.

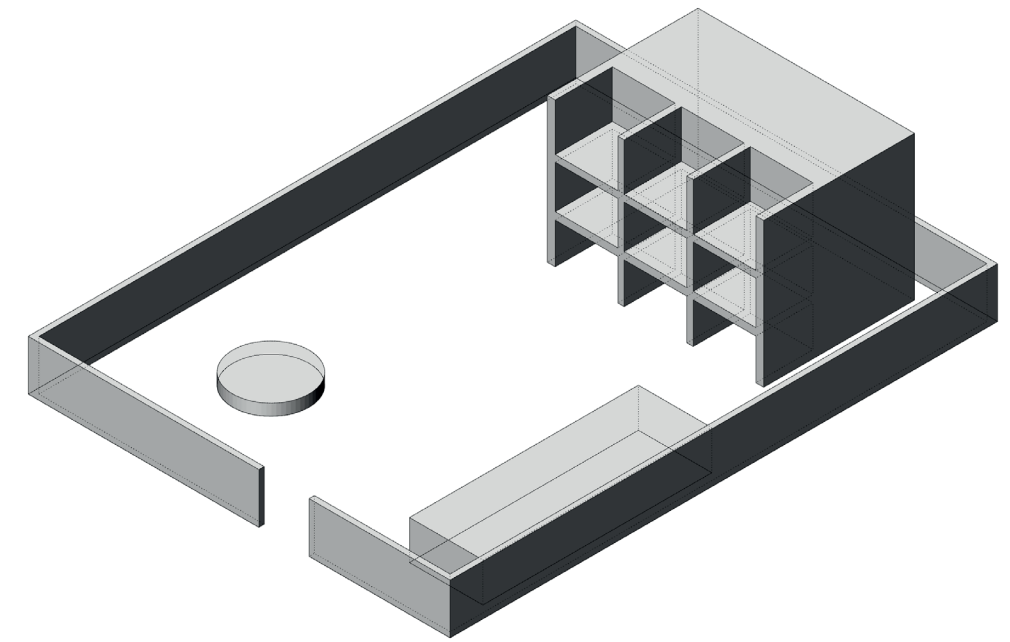
We prefer COSA or OUREBE 3 as sites for interventions.
They have a high potential.

Cosa can become an icon for the festival,
It is an open space on a corner of a major intersection,
it is an already established shelter.

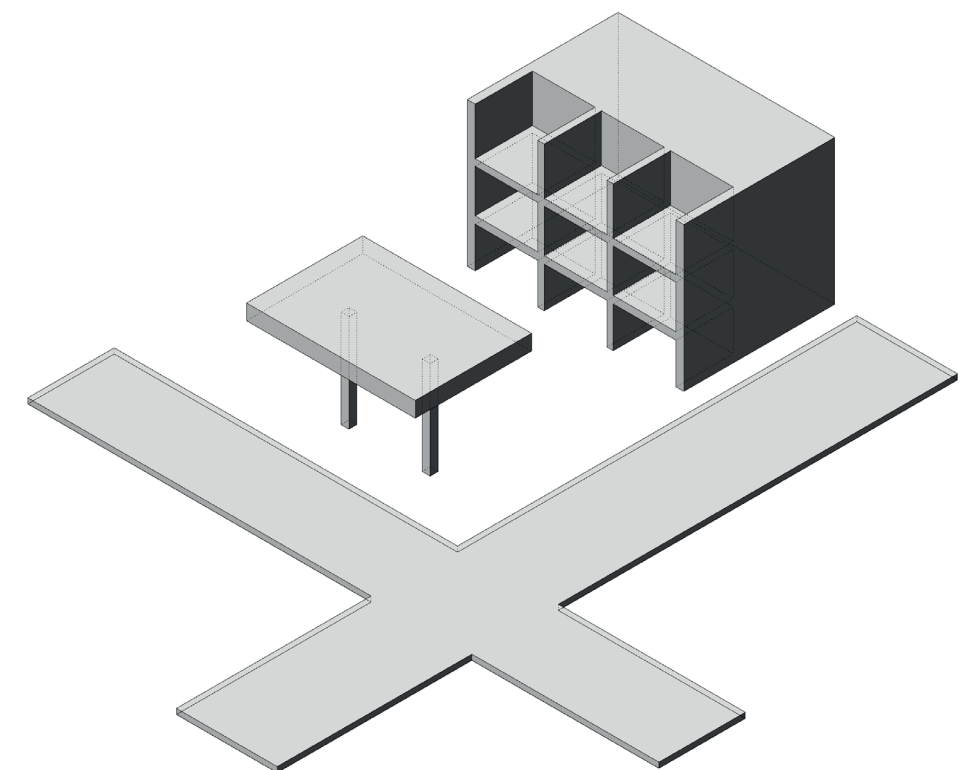
Ourebe is a calm space, with enclosure walls
It is a composition of objects of different scales
and different layers of openness.

Both have bare structures adjacent to them
that can be used for theatrical interventions.
While Cosa is an extroverted space,
Ourebe is introverted.

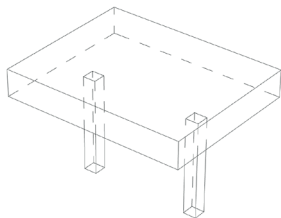
We want to enforce the useability of the sites
for the upcoming festivals.



OUREBE



COSA



COSA BELLA

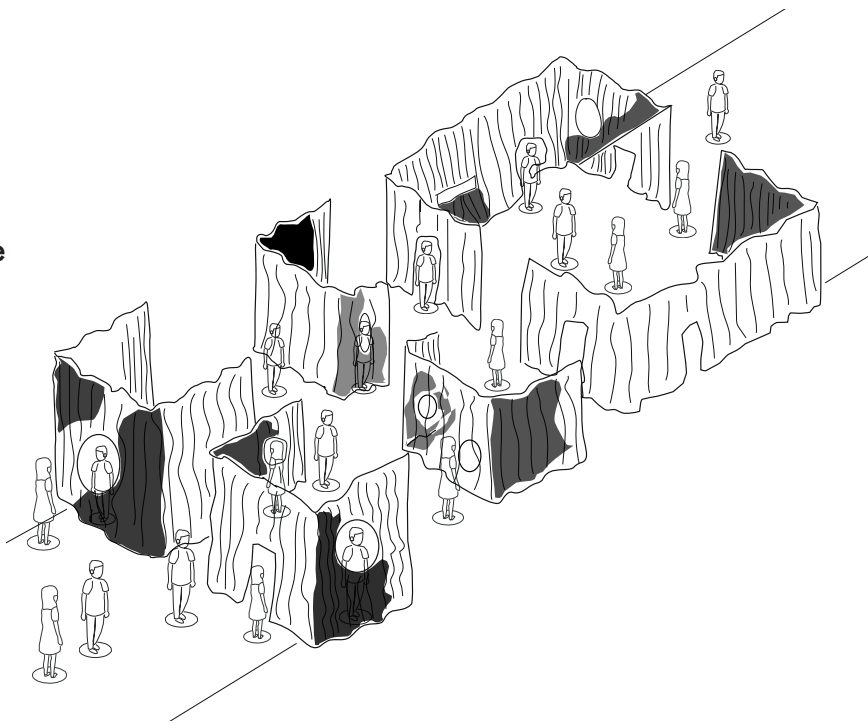
To create a space that has the possibility to become an icon for the future festivities of Univers des Mots. A space that can be enclosed with semitransparent fabrics and activated through gatherings. Its not enclosed, but still provides shelter.

Its an invitation to engage with theatrical culture, during the festival.
After the festival it can become a lively used space,
a place to serve neighbouring activities.

- A place marked by the festival.
- A place for the gathering of future writer
- A place to express a text as a communal activitiy.



Fabrics hung down from the structure



Architectural elements in the midst of the existing structure



Fabric as a soft border



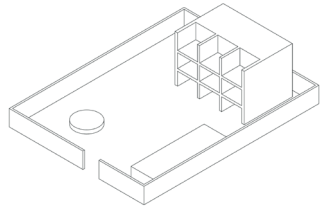
Semitransparent



Colourful adaptations



negative space

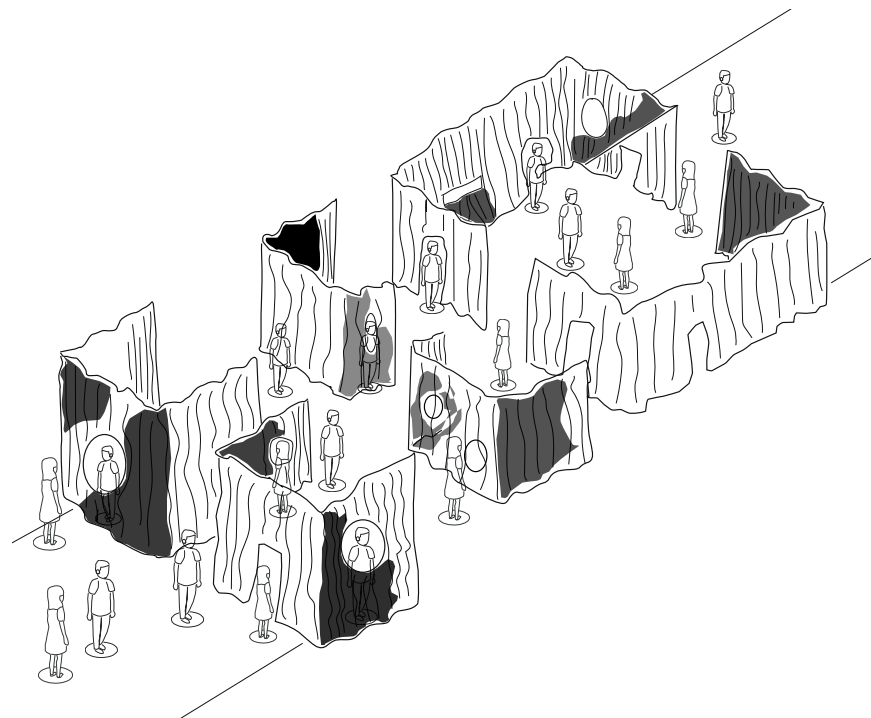


Ourebe 3

An enclosed space with a composition of theatrical elements.
 One Volume low and open, the other structure is tall and enclosed.
 There is a visual connection between the two opposing stances.
 The compound wall is an element that isolates the interior from the larger context.
 Vegetation and the idea of the garden arise at the location, a calm space.
 A possible laboratory space for the experimentation and production of intervention elements, for the space itself, and to be distributed into the city.



A textile connection between the human body and the building construction.



Architectural elements in the midst of the existing structure



techniques on how to create patterns with rope like fabrics.

Annie Dai
Carmen Egger
Ivan Jakaric
Oliver Rene Alunovic
Zach Baele